

# Joint Maritime Information Center

## Update 008 - JMIC Advisory Note

19 JUNE 2025

Regional Tension - Impact on Maritime Security

**Area of Concern:**

Arabian Gulf, Strait of Hormuz, Northern Arabian Sea

JMIC# 008-25

Regional Threat Level: **SIGNIFICANT**

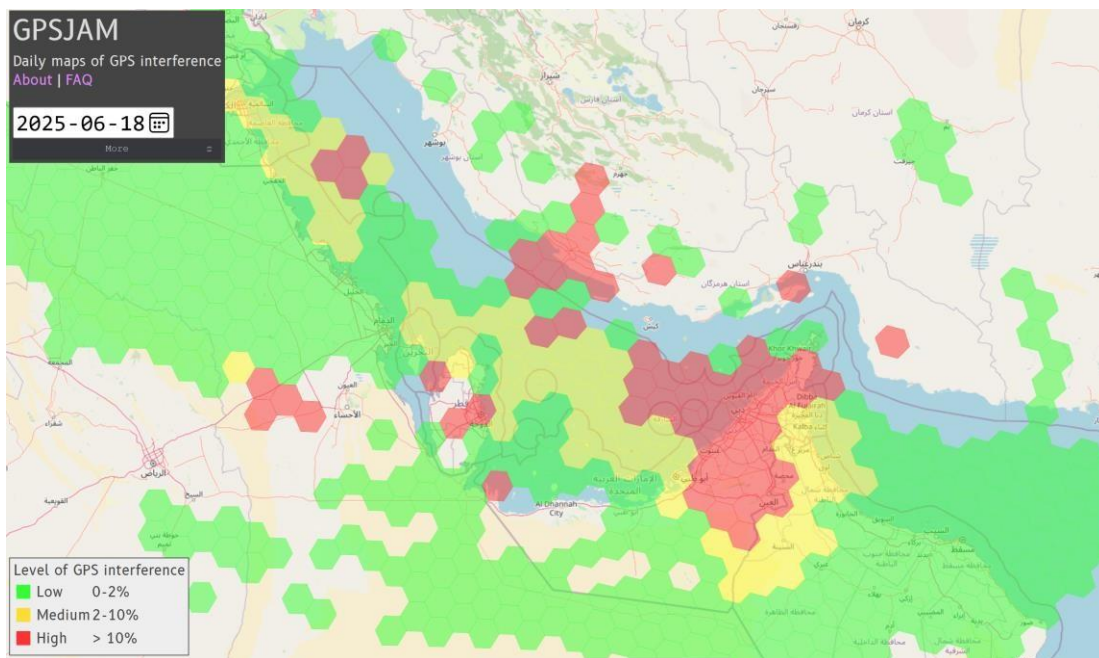
### Update 008:

#### **Headlines: No Significant Updates in Last 24-hours**

As of this report dated 19 June 2025 1300 UTC, the regional threat level remains **SIGNIFICANT** as strikes continue from both Iran and Israel. *The maritime threat level is **ELEVATED*** due to the possibility the Maritime environment, infrastructure and shipping may be impacted should tensions increase. The region is still experiencing persistently high levels of electronic interference, particularly with GNSS systems.

JMIC continues to receive reports of electronic interference in the SoH stemming from the Port of Bandar Abbas; however, the past 24-hours has seen a noticeable reduction. In the Central Arabian Gulf electronic interference has become excessive with some vessels preferring to sail during daylight hours. See Figure 1 below. Observed pattern changes described in situation update paragraph of this document.

Fig 1. GNSS Interference Map (source: [gpsjam.org](https://gpsjam.org))



Media narratives are offering a variety of themes, please conduct due diligence before accepting information from unconfirmed news, media or social media reports.

The JMIC continues to monitor the situation closely and will provide timely updates should there be any changes. Monitor the [UKMTO](#) and [MSCIO](#) website for updated information.

### 1. Situational updates as of 19 June:

- Over the past 24 hours a noticeable decrease in electronic interference was identified in the SoH while a more widespread electronic interference was reported in the Central Arabian Gulf.
- June 2024 averaged 114 vessels transiting the SoH daily. The figures below show consistency in the Strait of Hormuz traffic.

Date	12. June	13. June	14. June	15. June	16. June	17. June	18. June
East transit	57	55	62	53	65	58	57
West transit	59	70	51	58	53	56	73

*\*Data based on cargo-carrying vessels 1,000 GT and above.*

**2. Maritime Implications and Recommended Actions** - No significant changes to JMIC assessments and guidance to those already published. Refer to the additional resources below:

- [Latest guidance JMIC Advisory note 008 update 005](#)

- [JMIC Bridge Emergency Reference Cards](#)

- [BMP – Maritime Security](#)

### 3. Additional Notes:

This update is based on the most recent development over the past 24-hours. JMIC will issue daily updates unless events warrant more expeditious reporting.

Next Update 20 June

### Issued by:

JMIC in consultation with UKMTO & MSCIO.

